

LOOKBOOK

WonderWink® | Zoe+Chloe®

2022



WonderWink

- 4** **WONDERWINK PRO®**
- 9** **WONDERWINK W123®**
- 13** **WONDERWINK® WONDERWORK**
- 18** **WONDERWINK® RENEW**
- 22** **WONDERFLEX®**
- 26** **WONDERWINK ORIGINS®**
- 32** **ZOE + CHLOE® PRINT SCRUB TOPS**
- 43** **ZOE + CHLOE® PRINT CAPS**





DESIGNED TO WORK PRO

Comfort Collection

78% Polyester | 20% Rayon | 2% Spandex
Women's Modern Fit
Women's True-Plus Fit
Men's Modern Fit



IT'S SOFT.

Get carried away in comfort.



IT'S EASY.

Wash, wear & go.



IT FITS.

Stretches in all the right places.

WonderWink Pro seamlessly combines our signature utilities with innovative stretch fabric technology to enhance your performance and maximize comfort.



SCAN FOR
PRODUCT VIDEOS

78% Polyester / 20% Rayon / 2% Spandex

WONDERWINK PRO®



6319 WOMEN'S 4-POCKET V-NECK TOP

WOMEN'S MODERN FIT
XS - XL

TRUE-PLUS FIT
2XL - 3XL
(Size M length: 70 cm)



- Two front lower top-loading pockets and two side-entry pockets with right utility loop
- Stylized dropped shoulder and shoulder badge loop
- Vented sides
- Embroidery-friendly design
- WonderWink logo embroidery at left pocket



6419 WOMEN'S 4-POCKET NOTCH-NECK TOP

WOMEN'S MODERN FIT
XS - XL

TRUE-PLUS FIT
2XL - 3XL
(Size M length: 72 cm)



- Two front lower top-loading pockets and two side-entry pockets with right utility loop
- Stylized notch neckline and shoulder badge loop
- Curved princess seams with vented sides
- Embroidery-friendly design
- WonderWink logo embroidery at left pocket



6519 WOMEN'S 4-POCKET WRAP TOP

WOMEN'S MODERN FIT
XS - XL

TRUE-PLUS FIT
2XL - 3XL
(Size M length: front 70 cm, back 72 cm)



- Two front lower top-loading pockets and two side entry pockets
- Silhouette-enhancing curved Y neckline
- Stylized dropped shoulder
- Flattering curved double princess seam and vented sides
- Embroidery-friendly design
- WonderWink logo embroidery at left pocket



www.WonderWink.eu

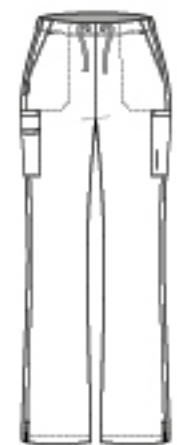


5319
WOMEN'S
MODERATE FLARE LEG
CARGO PANT

WOMEN'S MODERN FIT
XS - XL

TRUE-PLUS FIT
2XL - 3XL
(Size M leg opening: 23.5 cm)
Inseam length: 79 cm

- Two slash pockets with utility loop, two cargo pockets including double-layer utility pocket, and one back pocket
- Front drawstring with half back elastic waistband
- Vented bottom
- WonderWink logo embroidery at cargo pocket



Flare Leg



5419
WOMEN'S
KNIT WAIST CARGO
PANT

WOMEN'S MODERN FIT
XS - XL

TRUE-PLUS FIT
2XL - 3XL
(Size M leg opening: 18.5 cm)
Inseam length: 79 cm



Straight Leg



5719
WOMEN'S
SLIM CARGO
JOGGER PANT

WOMEN'S MODERN FIT
XS - XL

TRUE-PLUS FIT
2XL - 3XL
(Size M leg opening: 13.5 cm)
Inseam length: 72.5 cm



Jogger Leg

- Two slash pockets, two top-loading cargo pockets, two top-entry zip cargo pockets, and two back pockets
- Soft logo elastic waistband
- Slim leg jogger fit with elastic cuff at bottom hem
- WonderWink logo embroidery at cargo pocket



6619
MEN'S V-NECK TOP

MEN'S MODERN FIT
XS - 3XL
(Size M length: front 75.5 cm, back 78 cm)

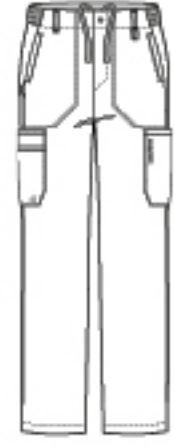
- One chest pocket with pen slot
- Double badge loop at shoulder
- Vented sides
- WonderWink logo embroidery at pocket



5619
MEN'S CARGO PANT

MEN'S MODERN FIT
XS - 3XL
(Size M leg opening: 22 cm)
Inseam length: 79 cm

- Two side pockets, two cargo pockets including double-layer utility pocket, and one back pocket
- Drawstring waist, elastic back, and belt loops
- WonderWink logo embroidery at cargo pocket



Straight Leg



Style #	6319	6419	6519	5319	5419	5719	6619	5619
Sketch								
Style	Women's 4 Pocket V-Neck Top	Women's 4 Pocket Notch Neck Top	Women's 4 Pocket Wrap Top	Women's Moderate Flare Leg Cargo Pant	Women's Knit Waist Cargo Pant	Women's Slim Cargo Jogger Pant	Men's V-Neck Top	Men's Cargo Pant
Sizes	XS - 3XL	XS - 3XL	XS - 3XL	XS - 3XL	XS - 3XL	XS - 3XL	XS - 3XL	XS - 3XL
Fit	WM I WTP	WM I WTP	WM I WTP	WM I WTP	WM I WTP	WM I WTP	MM	MM
Collection	COMFORT	COMFORT	COMFORT	COMFORT	COMFORT	COMFORT	COMFORT	COMFORT
Pockets	4	4	4	7	4	8	1	7
Neck/Leg Style	Curved V-Neck	Notch Neck	Y-Neck	Flare	Straight	Slim Jogger	V-Neck	Straight
Badge/Utility Loop	•	•	•	•	•	•	•	•
Vented Sides/Bottoms	•	•	•	•	•		•	
Waist				Half Elastic	Dye-to-Match Flex Knit	Logo Elastic		Elastic Back
Drawstring				Drawstring				Drawstring
Additional Features	Stylized dropped shoulder	Flattering curved princess seam	Flattering curved double princess seam	Double cargo pocket on wearer's right side	Flattering low-profile cargo pockets on each leg	Elastic cuff at bottom hem, zip cargo pockets	Stylized dropped shoulder, chest pocket with pen slot	Belt loops, functional fly
white - WHIT	WHIT	WHIT	WHIT	WHIT	WHIT	WHIT	WHIT	WHIT
black - BLAC	BLAC	BLAC	BLAC	BLAC	BLAC	BLAC	BLAC	BLAC
pewter - PEWT	PEWT	PEWT		PEWT	PEWT	PEWT	PEWT	PEWT
navy - NAVY	NAVY	NAVY	NAVY	NAVY	NAVY	NAVY	NAVY	NAVY
royal - ROYA	ROYA	ROYA	ROYA	ROYA	ROYA	ROYA	ROYA	ROYA
ceil blue - CEIL	CEIL	CEIL	CEIL	CEIL	CEIL	CEIL	CEIL	CEIL
caribbean blue - CARI	CARI	CARI	CARI	CARI	CARI	CARI	CARI	CARI
wine - WINE	WINE	WINE	WINE	WINE	WINE	WINE	WINE	WINE



W1 FASHION FIT



Feel comfortable and confident in distinctive styles with an unsurpassed fit. Choose from silhouettes that are tailored for all shapes and body types. Ranging from ladies' petites to True-Plus Fit sizing, each garment delivers a polished and slimming appearance. Men's styles follow suit with a Modern Fit and understated style.

Women's Modern/Classic Fit					True-Plus Fit			
XS	S	M	L	XL	2X	3X	4X	5X

Revolutionizing the industry, these styles are offered in True-Plus Fit sizing. Available in 1X-5X, each garment is fit to comfortably contour and flatter the curves of your body. Eliminate the tugging, the pulling, and the frustration with our attention to fit details such as longer sleeve lengths, higher pant rises, and curvier hips. Find the true-fit for you!

W2 FABRIC



Leading Edge MicroFiber Technology: Smart 4-way stretch fabric constructed from flex-adaptive yarn synchronizes with your every movement. Quick-dry wicking fabric pulls moisture away from your body to keep you cool, fresh, and temperature regulated.



Dimensional Stability: With no shortage of resiliency, this fabric is shrink proof, fade proof, wrinkle resistant, and able to withstand repeated wash and wear.

W3 FUNCTION



Standout styling paired with functional utility creates superb organization using spacious pockets, multiple utility loops, and thoughtful trims.

Active Collection

- 100% Microfiber Poly 4-Way Stretch
- Women's Modern Fit
- Women's Classic Fit
- Women's True-Plus Fit
- Men's Modern Fit
- Unisex Fit



SCAN FOR PRODUCT VIDEOS

ESSENTIALS THAT WORK



W123



6155
WOMEN'S
STYLIZED V-NECK TOP

- WOMEN'S MODERN FIT
XS - XL
- TRUE-PLUS FIT
2X - 3X
(Size M length: 69 cm)
- BLAC

CARI

CEIL

HTPK

NAVY

PEWT

ROYA

TEAL

WHIT

WINE

- Two front lower top-loading double pockets including sectional pocket, cell phone pocket, and hidden three-part utility loop
- Shoulder badge loop
- Vented sides
- WonderWink silicone ring



6255
WOMEN'S
BASIC V-NECK TOP

- WOMEN'S CLASSIC FIT
XS - XL
- TRUE-PLUS FIT
2X - 3X
(Size M length: 72 cm)
- BLAC

CEIL

NAVY

PEWT

ROYA

WHIT

WINE

- Two front lower top-loading pockets with hidden three-part utility loop
- Shoulder badge loop
- Vented sides
- WonderWink silicone ring



6355
MEN'S
V-NECK TOP

- MEN'S MODERN FIT
XS - 3XL
(Size M length: front 73.5 cm, back 76 cm)
- BLAC

CEIL

NAVY

PEWT

ROYA

WHIT

WINE

- Two lower side-entry pockets, one chest pocket with utility loop, and pen slot sleeve pocket
- Shoulder badge loop
- Longer back length with vented sides
- Embroidery-friendly design
- WonderWink silicone ring



5155
WOMEN'S
FLAT-FRONT CARGO PANT

- WOMEN'S MODERN FIT
XS - XL
PETITE: XS - XL
TALL: XS - XL
- TRUE-PLUS FIT
2X - 3X
PETITE: 2X - 3X
TALL: 2X - 3X
(Size M leg opening: 19.5 cm)
Inseam length: Regular: 79 cm, Petite: 72 cm, Tall: 84 cm
- BLAC

CARI

CEIL

HTPK

NAVY

PEWT

ROYA

TEAL

WHIT

WINE

- Two front slant pockets, two stylized cargo pockets, one cell phone pocket, and two back pockets with pen slot
- Flat-front full elastic waist with inside webbed drawstring
- Utility loop at waist
- Vented bottom



Straight Leg



5555
WOMEN'S
COMFORT WAIST
CARGO JOGGER PANT

- WOMEN'S MODERN FIT
XS - XL
PETITE: XS - XL
TALL: XS - XL
- TRUE-PLUS FIT
2X - 3X
PETITE: 2X - 3X
TALL: 2X - 3X
(Size M leg opening: 11.5 cm)
Inseam length: Regular: 72.5 cm, Petite: 67.5 cm, Tall: 80 cm
- BLAC

CEIL

NAVY

PEWT

ROYA

WHIT

WINE

- Two front welt pockets with runners pocket along back waist, and two cargo pockets with three accessory pockets
- Dyed-to-Match knit yoga waist with interior control tie
- Slim leg jogger fit with knit cuff at bottom hem



Jogger Leg



5355
MEN'S
FLAT FRONT
CARGO PANT

- MEN'S MODERN FIT
XS - 3XL
SHORT XS - 3XL
TALL: S - 3XL
(Size M leg opening: 22 cm)
Inseam length: Regular: 79 cm, Short: 72 cm, Tall: 86 cm
- BLAC

CEIL

NAVY

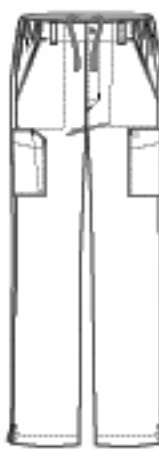
PEWT

ROYA

WHIT

WINE

- Two front slant pockets, two cargo pockets with pen slot, one cell phone pocket, and two back pockets with pen slot and hook-and-loop closure
- Flat-front elastic waist with inside drawstring, zip fly and belt loops
- Hidden gusset and vented bottom



Straight Leg



WONDERWINK W123®

Style #	6155	6255	5155	5555	6355	5355
Sketch						
Style	Women's Stylized V-Neck Top	Women's Basic V-Neck Top	Women's Flat-Front Cargo Pant	Women's Comfort Waist Cargo Jogger Pant	Men's V-Neck Top	Men's Flat-Front Cargo Pant
Sizes	XS - XL Plus: 2X - 3X	XS - XL Plus: 2X - 3X	XS - XL Plus: 2X - 3X Petite: XS - XL Plus Petite: 2X - 3X Tall: XS - XL Plus Tall: 2X - 3X	XS - XL Plus: 2X - 3X Petite: XS - XL Plus Petite: 2X - 3X Tall: XS - XL Plus Tall: 2X - 3X	XS - 3XL	XS - 3XL Short: XS - 3XL Tall: S - 3XL
Fit	WM I WTP	WC I WTP	WM I WTP	WM I WTP	MM	MM
Collection	ACTIVE	ACTIVE	ACTIVE	ACTIVE	ACTIVE	ACTIVE
Pockets	4	2	7	7	4	7
Neck/Leg Style	Curved V-Neck	Curved V-Neck	Straight	Jogger	V-Neck	Straight
Badge/Utility Loop	•	•	•		•	
Vented Sides/Bottoms	•	•	•		•	•
Waist			Full-Elastic	Dye-to-Match Knit Yoga		Half Elastic
Drawstring			Drawstring	Interior Control Tie		Drawstring
Additional Features	Cell phone pocket, hidden utility loop, WonderWink silicone ring	Hidden utility loop, WonderWink silicone ring	Cell phone pocket, pen slot, flat front	Slim leg jogger fit with knit cuff at bottom hem	Pen slot sleeve pocket, WonderWink silicone ring, longer back length	Zip fly and hidden gusset, cell phone pocket
white - WHIT	WHIT	WHIT	WHIT	WHIT	WHIT	WHIT
black - BLAC	BLAC	BLAC	BLAC	BLAC	BLAC	BLAC
pewter - PEWT	PEWT	PEWT	PEWT	PEWT	PEWT	PEWT
navy - NAVY	NAVY	NAVY	NAVY	NAVY	NAVY	NAVY
royal - ROYA	ROYA	ROYA	ROYA	ROYA	ROYA	ROYA
ceil blue - CEIL	CEIL	CEIL	CEIL	CEIL	CEIL	CEIL
caribbean blue - CARI	CARI		CARI			
teal - TEAL	TEAL		TEAL			
wine - WINE	WINE	WINE	WINE	WINE	WINE	WINE
hot pink - HTPK	HTPK		HTPK			



WONDERWINK WONDERWORK

Value Collection

Designed for groups, Wonderwork offers a wide range of product styles, colors, and size ranges to meet the needs of any team. Includes volunteer and maternity uniforms.

65% Polyester | 35% Cotton
Women's Classic Fit
Women's Modern Fit
Women's True-Plus Fit
Men's Classic Fit
Unisex Fit



SCAN FOR
PRODUCT VIDEOS



100

UNISEX V-NECK TOP

UNISEX FIT

XS - 3XL

(Size M length: 70.5 cm)

- One double chest pocket with utility loop
- Vented sides

BLAC

CARI

CEIL

NAVY

PEWT

ROYA

TEAL

WHIT

WINE



- Two front lower pockets with utility loop, one pen slot, and one cell phone pocket
- Soft line V-neck shape
- Vented sides

101

WOMEN'S V-NECK TOP

WOMEN'S CLASSIC FIT

XS - XL

TRUE-PLUS FIT

2XL - 3XL

(Size M length: 72 cm)

BLAC

CARI

CEIL

NAVY

PEWT

ROYA

TEAL

WHIT

WINE



- Two front lower pockets and one double chest pocket with utility loop
- Modified V-neck and shoulder detail for a sporty, masculine look
- Longer back length
- Vented sides

103

MEN'S V-NECK TOP

MEN'S CLASSIC FIT

XS - 3XL

(Size M length: front 76 cm, back 79 cm)

BLAC

CARI

CEIL

NAVY

PEWT

ROYA

TEAL

WHIT

WINE



501

WOMEN'S PULL-ON CARGO PANT

WOMEN'S CLASSIC FIT

XS - XL

TRUE-PLUS FIT

2XL - 3XL

(Size M leg opening: 23 cm)

Inseam length: 79 cm

- Two front slash pockets, one cargo pocket with utility loop, one pen slot, and one cell phone pocket
- Full elastic waist, front rise sits slightly below natural waist with higher back rise for more coverage

BLAC

CARI

CEIL

NAVY

PEWT

ROYA

TEAL

WHIT

WINE



Straight Leg



504

WOMEN'S STRAIGHT LEG CARGO PANT

WOMEN'S CLASSIC FIT

XS - XL

TRUE-PLUS FIT

2XL - 3XL

(Size M leg opening: 22 cm)

Inseam length: 79 cm

- Two front slash pockets, one back patch pocket, and one double cargo pocket with pen slot and utility loop, bungee loop at left pocket
- Full elastic waist with drawstring and belt loops
- Higher back rise for more coverage
- Vented bottom

BLAC

CARI

CEIL

NAVY

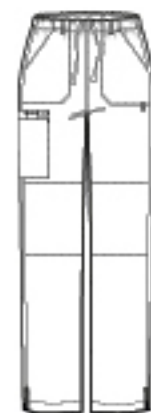
PEWT

ROYA

TEAL

WHIT

WINE



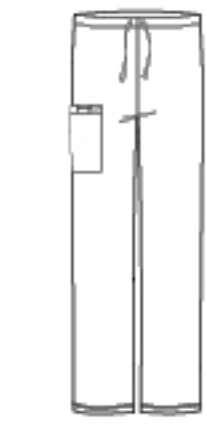
Straight Leg



500
UNISEX
DRAWSTRING CARGO PANT

UNISEX FIT
XS - 3XL
(Size M leg opening: 23 cm)
Inseam length: 79 cm

- One cargo pocket with utility loop, one pen slot, one cell phone pocket, and one back pocket
- Natural rise with a full drawstring waist



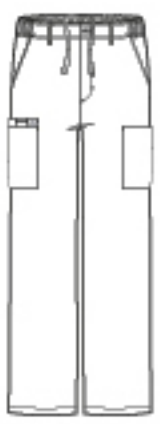
Straight Leg



503
MEN'S
CARGO PANT

MEN'S CLASSIC FIT
XS - 3XL
(Size M leg opening: 25 cm)
Inseam length: 79 cm

- Two front slash pockets, two cargo pockets including one double cargo pocket, one pen slot, one cell phone pocket, and one back pocket
- Fully constructed waist, functional fly with button closure, full inner drawstring, back elastic, and five belt loops



Straight Leg

Style #	100	101	103	500	501	503	504
Sketch							
Style	Unisex V-Neck Top	Women's V-Neck Top	Men's V-Neck Top	Unisex Drawstring Cargo Pant	Women's Pull-On Cargo Pant	Men's Cargo Pant	Women's Straight Leg Cargo Pant
Sizes	XS - 3XL	XS - 3XL	XS - 3XL	XS - 3XL	XS - 3XL	XS - 3XL	XS - 3XL
Fit	U	WC WTP	MC	U	WC WTP	MC	WC WTP
Collection	VALUE	VALUE	VALUE	VALUE	VALUE	VALUE	VALUE
Pockets	2	3	4	3	4	6	5
Neck/Leg Style	V-Neck	V-Neck	V-Neck	Straight	Straight	Straight	Straight
Badge/Utility Loop	•	•	•	•	•		•
Vented Sides/Bottoms	•	•	•				•
Waist				Natural Rise	Full Elastic	Back Elastic	Full Elastic
Drawstring				Drawstring		Drawstring	Drawstring
Additional Features	Double chest pocket with utility loop	Front lower pockets with cell phone pocket	Longer back length	Cell phone pocket, pen slot	Higher back rise for more coverage, cell phone pocket, pen slot	Functional fly with button closure, cell phone pocket, pen slot	Signature ID bungee loop at left pocket, cell phone pocket
white - WHIT	WHIT	WHIT	WHIT	WHIT	WHIT	WHIT	WHIT
black - BLAC	BLAC	BLAC	BLAC	BLAC	BLAC	BLAC	BLAC
pewter - PEWT	PEWT	PEWT	PEWT	PEWT	PEWT	PEWT	PEWT
navy - NAVY	NAVY	NAVY	NAVY	NAVY	NAVY	NAVY	NAVY
royal - ROYA	ROYA	ROYA	ROYA	ROYA	ROYA	ROYA	ROYA
ceil blue - CEIL	CEIL	CEIL	CEIL	CEIL	CEIL	CEIL	CEIL
teal - TEAL	TEAL	TEAL	TEAL	TEAL	TEAL	TEAL	TEAL
caribbean blue - CARI	CARI	CARI	CARI	CARI	CARI	CARI	CARI
wine - WINE	WINE	WINE	WINE	WINE	WINE	WINE	WINE



SCAN FOR
PRODUCT VIDEOS



ETHICALLY SOURCED SUSTAINABLE FASHION RENEW

Premium Collection

49% Polyester / 46% Recycled Polyester /
5% Spandex

Women's Modern Fit
Women's True-Plus Fit
Men's Modern Fit



Each garment recycles five water bottles
and is combined with spandex to create a
flexible, feel-good fabric.



Wear-tested for quality and durability.
Hassle-free maintenance.



RENEW packaging is biodegradable and
will return to nature in half a year.



Our hang tags are printed on
environmentally-friendly, socially
responsible, FSC certified paper.



Together, we can make a difference.

LET'S BE KIND TO OUR PLANET

49% Polyester / 46% Recycled Polyester / 5% Spandex

WONDERWINK® RENEW



6134 WOMEN'S V-NECK TOP

WOMEN'S MODERN FIT
XS - XL

TRUE-PLUS FIT
1X - 3X
(Size M length: 70.5 cm)



- Top-loading pockets with two double invisible zip pockets
- Flattering curved V-Neck
- Grosgrain multi-accessory loops inside wearer's right pocket
- Shoulder badge loop
- Shape-enhancing princess seams
- Curved hem



6234 WOMEN'S EZ-ZIP TOP

WOMEN'S MODERN FIT
XS - XL

TRUE-PLUS FIT
1X - 3X
(Size M length: 68.5 cm)



- Two curved front side pockets, two back pockets
- Flattering curved V-Neck
- Hidden zipper opening at shoulder for easy minimal-contact removal
- Shoulder badge loop
- Shape-enhancing curved princess seams
- Curved hem



6334 WOMEN'S MOCK WRAP TOP

WOMEN'S MODERN FIT
XS - XL

TRUE-PLUS FIT
1X - 3X
(Size M length: 69 cm)



- Two sleek side pockets, two side-entry pockets
- Feminine Y-neck
- Grosgrain trim at shoulder with badge loop
- Shape-enhancing princess seams
- Embroidery-friendly design





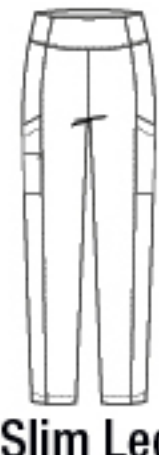
5134
WOMEN'S
HIGH-WAIST POWER
PANT

WOMEN'S MODERN FIT
XS - XL

TRUE-PLUS FIT
1X - 3X
(Size M leg opening:
14.5 cm, Inseam: 72.5 cm)

- BAYB
- BLAC
- CLAY
- GRHT
- NAVY
- PEWT
- ROYA
- WINE

- Two curved side slim cargo pockets with grosgrain multi-accessory loops at wearer's left and small essential pocket with invisible zipper at wearer's right
- Waistband lined with power mesh for tummy control
- Slim, sleek leg
- Pewter power mesh at back waistband for extra support and stretch



5234
WOMEN'S
JOGGER PANT

WOMEN'S MODERN FIT
XS - XL

TRUE-PLUS FIT
1X - 3X
(Size M leg opening: 13.5 cm,
Inseam: 72.5 cm)

- BAYB
- BLAC
- CLAY
- GRHT
- NAVY
- PEWT
- ROYA
- WINE

- Front curved side pockets, double invisible zip pockets, cargo pocket with grosgrain multi-accessory loops at wearer's right, and two back patch pockets
- Mid-rise flat front, elasticized back, pull-on waist with grey heather drawstring
- Self-fabric elasticized bottom cuffs



6034
MEN'S
EZ-ZIP TOP

MEN'S MODERN FIT
XS - 3XL

(Size M length: 76 cm)

- BLAC
- GRHT
- NAVY
- PEWT
- ROYA
- WINE

- Chest pocket with grosgrain trim and dedicated pen slot, and sleeve pocket on wearer's left with invisible zip closure
- V-Neck with hidden zipper opening at shoulder for easy minimal-contact removal
- Shoulder badge loop
- Back yoke with locker loop
- Side vents



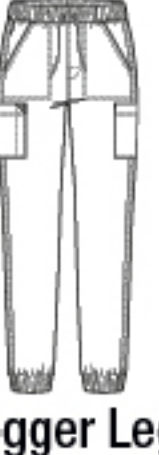
5034
MEN'S
JOGGER PANT

MEN'S MODERN FIT
XS - 3XL

(Size M leg opening: 14 cm,
Inseam: 72.5 cm)

- BLAC
- GRHT
- NAVY
- PEWT
- ROYA
- WINE

- Two front slash side pockets, small essential pocket at wearer's right, cargo pocket with grosgrain multi-accessory loops, and two back patch pockets with hook-and-loop closure
- Mid-rise fully elasticized pull-on waist with grey heather drawstring
- Badge loop
- Self-fabric elasticized bottom cuffs



Style #	6134	6234	6334	5134	5234	6034	5034
Sketch							
Style	Women's V-Neck Top	Women's EZ-Zip Top	Women's Wrap Top	Women's High-Waist Power Pant	Women's Jogger Pant	Men's EZ-Zip Top	Men's Jogger Pant
Sizes	XS - XL Plus: 1X - 3X	XS - XL Plus: 1X - 3X	XS - XL Plus: 1X - 3X	XS - XL Plus: 1X - 3X	XS - XL Plus: 1X - 3X	XS - 3XL	XS - 3XL
Fit	WM I WTP	WM I WTP	WM I WTP	WM I WTP	WM I WTP	MM	MM
Collection	PREMIUM	PREMIUM	PREMIUM	PREMIUM	PREMIUM	PREMIUM	PREMIUM
Pockets	4	4	4	3	7	3	7
Neck/Leg Style	V-Neck	V-Neck	Y-Neck	Slim	Jogger	V-Neck	Jogger
Badge/Utility Loop	•	•	•	•	•	•	•
Vented Sides/Bottoms						•	
Waist				Waistband with Power Mesh Back	Pull-On Waist, Elasticized Back		Full Elasticized Pull-On
Drawstring				Interior Control Tie	Drawstring		Drawstring
Additional Features	Grosgrain multi-accessory loops, shape enhancing princess seams, curved hem	Hidden zipper opening at shoulder, shape-enhancing curved princess seams, curved hem	Embroidery-friendly design, grosgrain trim at shoulder, shape- enhancing princess seams	Pewter power mesh at back waistband, grosgrain multi-accessory loops	Grosgrain multi-accessory loops, self-fabric elasticized bottom cuffs	Hidden zipper, dedicated pen slot, back yoke with locker loop	Grosgrain multi-accessory loops, self-fabric elasticized bottom cuffs
black - BLAC	BLAC	BLAC	BLAC	BLAC	BLAC	BLAC	BLAC
pewter - PEWT	PEWT	PEWT	PEWT	PEWT	PEWT	PEWT	PEWT
navy - NAVY	NAVY	NAVY	NAVY	NAVY	NAVY	NAVY	NAVY
royal - ROYA	ROYA	ROYA	ROYA	ROYA	ROYA	ROYA	ROYA
bay blue - BAYB	BAYB	BAYB	BAYB	BAYB	BAYB		
wine - WINE	WINE	WINE	WINE	WINE	WINE	WINE	WINE
clay - CLAY	CLAY	CLAY	CLAY	CLAY	CLAY		
Grey Heather - GRHT	GRHT	GRHT	GRHT	GRHT	GRHT	GRHT	GRHT



WONDERFLEX®

Fashion Collection

52% Cotton | 45% Polyester | 3% Spandex
Women's Modern Fit
Women's True-Plus Fit

Fashion-forward collection packed with eye-catching details like triple-needle stitching and contrast color accents. A fan favorite!

EXPECT THE UNEXPECTED



SCAN FOR
PRODUCT VIDEOS



52% Cotton / 45% Polyester / 3% Spandex

WONDERFLEX® 



6108
VERITY
WOMEN'S
V-NECK TOP

WOMEN'S MODERN FIT
2XS - XL
(Size M length: 69 cm)

TRUE-PLUS FIT
2XL - 3XL



- Two front lower tilted patch pockets including one WonderWink signature triple pocket
- Triple-needle stitching at the dropped shoulder
- Two front body darts for superior shaping
- WonderFLEX LE badge above wearer's left pocket
- Vented sides



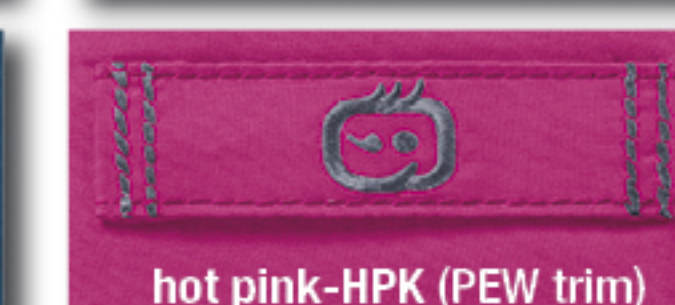
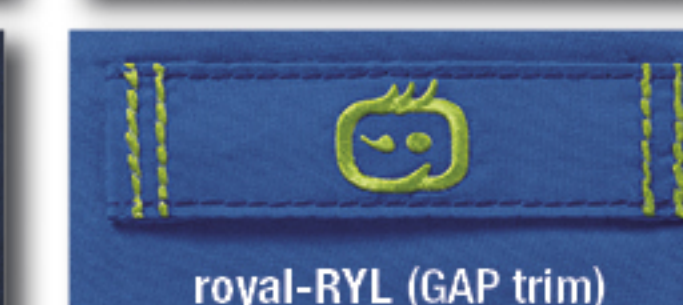
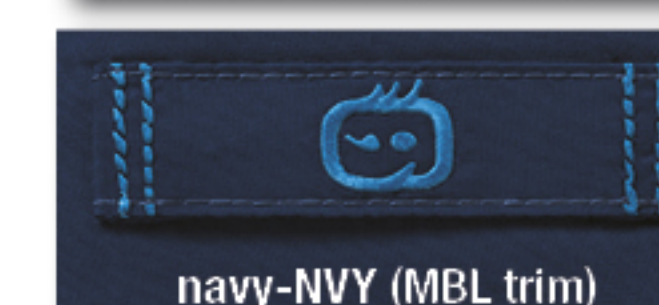
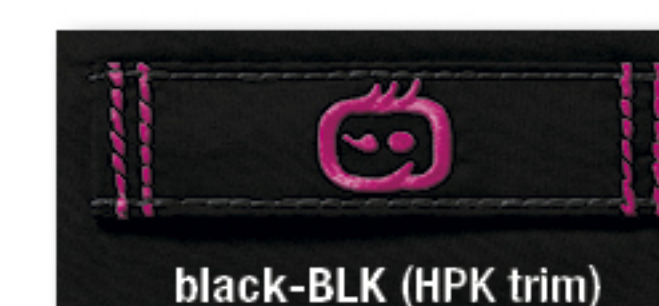
6208
PATIENCE
WOMEN'S
CURVED NOTCH-NECK TOP

WOMEN'S MODERN FIT
2XS - XL
(Size M length: 70.5 cm)

TRUE-PLUS FIT
2XL - 3XL



- Two front lower tilted patch pockets including one WonderWink signature triple pocket
- Triple-needle stitching at the dropped shoulder
- Curve-shaped neck facing overlaps at center front
- Banded front yoke with WonderFLEX LE badge at wearer's left chest
- Vented sides



www.WonderWink.eu



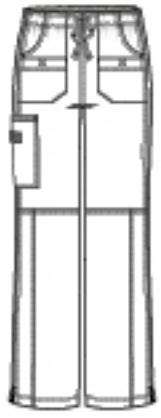
5108
FAITH
WOMEN'S MULTI-POCKET
CARGO PANT

WOMEN'S MODERN FIT
2XS - XL

TRUE-PLUS FIT
2XL - 3XL
(Size M leg opening: 25.5 cm)
Inseam length: 79 cm

- BLK
- CBL
- CHA
- CRB
- HPK
- NVY
- PEW
- PYA
- RYL
- WIN

- Four front pockets including two lower tossed pockets with hook-and-loop fastener, one cargo pocket, and one back pocket with mock dart and signature ID bungee loop
- Triple-needle stitching at pocket openings
- Full elastic waist with full webbed drawstring
- WonderFLEX LE badge at cargo pocket
- Double-needle stitching at knee, side seams, and along front seams adds extra durability
- Vented bottom



Boot Cut



5308
GRACE
WOMEN'S FLARE LEG
CARGO PANT

WOMEN'S MODERN FIT
2XS - XL

TRUE-PLUS FIT
2XL - 3XL
(Size M leg opening: 27 cm)
Inseam length: 79 cm

- BLK
- CRB
- NVY
- PEW
- RYL
- WIN

- Two front pockets, one cargo, and one back pocket with mock dart and signature ID bungee loop at top corner
- Back elastic waist with full webbed drawstring
- Triple-needle stitching at front pocket openings
- WonderFLEX LE badge at wearer's right side
- Double-needle stitching at side seams adds extra durability
- Vented bottom



Flare Leg



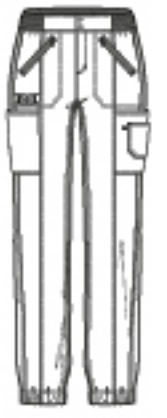
5908
LOVE
WOMEN'S UTILITY
CARGO ZIP JOGGER
PANT

WOMEN'S MODERN FIT
XS - XL

TRUE-PLUS FIT
2XL - 3XL
(Size M leg opening: 13.5 cm)
Inseam length: 76 cm

- BLK
- NVY
- PEW
- RYL

- Two zipper-closure front pockets, two large cargo pockets, one accessory pocket, and one back pocket
- Fully constructed waistband with rib-knit, zipper, and snap button closure
- WonderFLEX LE badge at wearer's right side
- Elasticized hem with zipper at back seam



Jogger Leg

Style #	6108	6208	5108	5308	5908
Sketch					
Style	Verity Women's V-Neck Top	Patience Women's Curved Notch-Neck Top	Faith Women's Multi Pocket Cargo Pant	Grace Women's Flare Leg Cargo Pant	Love Women's Utility Cargo Zip Jogger Pant
Sizes	2XS - 3XL	2XS - 3XL	2XS - 3XL	2XS - 3XL	XS - 3XL
Fit	WM I WTP	WM I WTP	WM I WTP	WM I WTP	WM I WTP
Pockets	4	4	6	4	6
Neck/Leg Style	V-Neck	Curved Notch-Neck	Boot Cut	Flare Leg	Jogger Leg
Badge/Utility Loop	•	•	•	•	•
Vented Sides/Bottoms	•		•	•	Zipper Vent
Waist			Full Elastic	Back Elastic	Dye-to-Match rib knit back elastic
Drawstring			Drawstring	Drawstring	
Additional Features	Triple-needle stitching at the dropped shoulder, vented sides	Triple-needle stitching at the dropped shoulder, curve-shaped neck facing overlaps	Double-needle stitching at knee along front seams	Triple-needle stitching at front pocket openings, double-needle stitching at side seams	Zipper and snap-button closure, two zipper-closure front pockets, elasticized bottom jogger hem
black - BLK	BLK	BLK	BLK	BLK	BLK
pewter - PEW	PEW	PEW	PEW	PEW	PEW
navy - NVY	NVY	NVY	NVY	NVY	NVY
royal - RYL	RYL	RYL	RYL	RYL	RYL
ceil blue - CBL	CBL		CBL		
caribbean blue - CRB	CRB	CRB	CRB	CRB	
hot pink - HPK	HPK		HPK		
wine - WIN	WIN	WIN	WIN	WIN	
papaya - PYA	PYA		PYA		
charcoal - CHA	CHA		CHA		



ORIGINS

Fashion Collection

65% Polyester | 35% Cotton
Women's Modern Fit
Women's True-Plus Fit
Unisex Fit

BE BOLD. BE ORIGINAL.



SCAN FOR
PRODUCT VIDEOS

65% Polyester / 35% Cotton

WONDERWINK ORIGINS® 



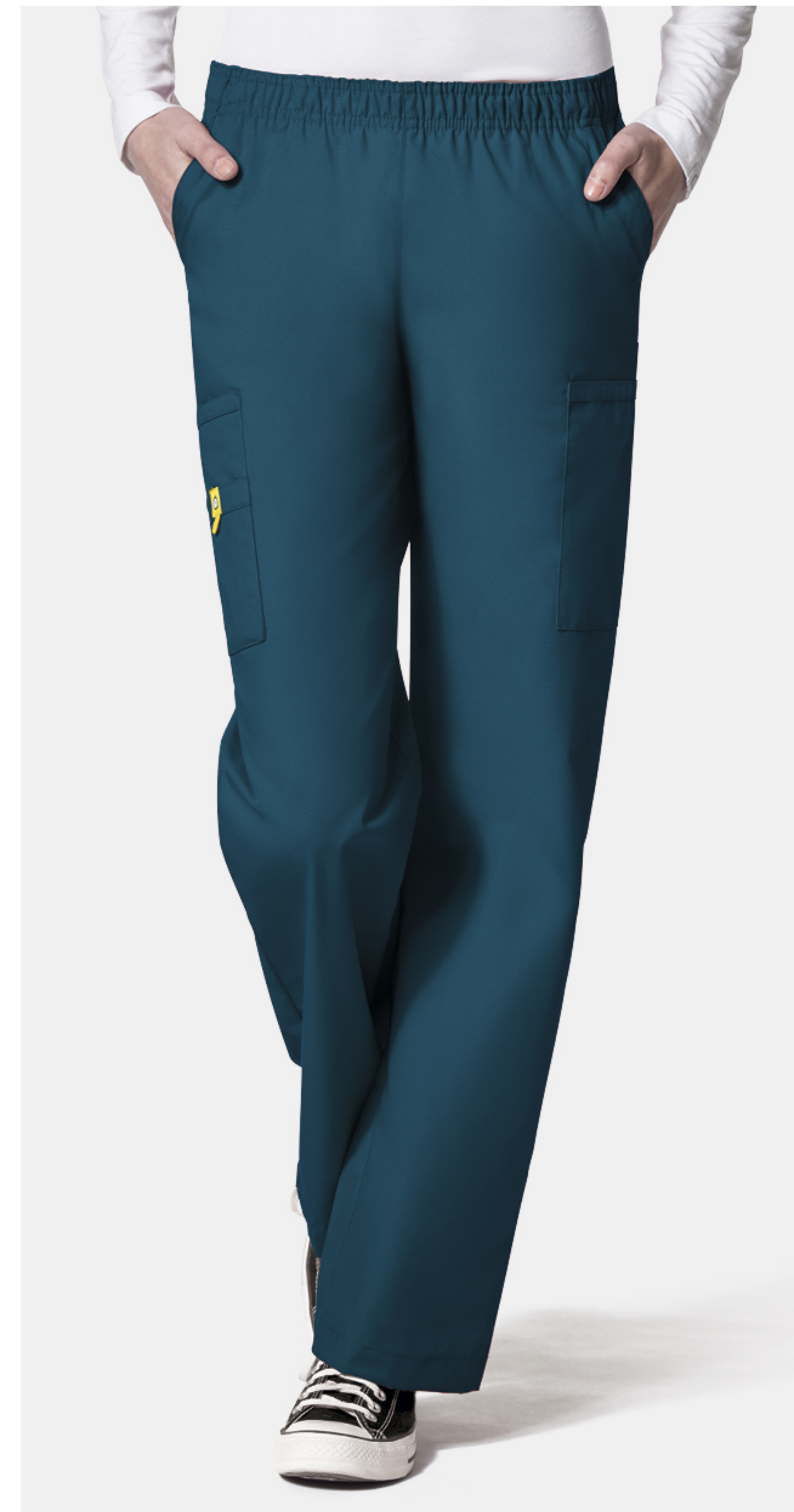
**6016
THE BRAVO
WOMEN'S
V-NECK TOP**

WOMEN'S MODERN FIT
XS - XL

TRUE-PLUS FIT
2XL - 3XL
(Size M length: 70.5 cm)



- Two front lower pockets including one WonderWink signature triple pocket with hidden mesh pocket
- Signature ID bungee loop
- Hidden three-part utility loop
- Vented sides



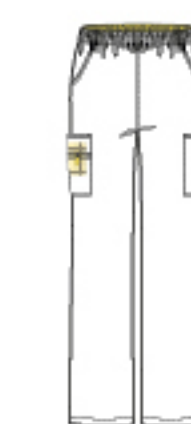
**5016
THE QUEBEC
WOMEN'S
FULL ELASTIC CARGO PANT**

WOMEN'S MODERN FIT
XS - XL
PETITE: XS - XL
TALL: XS - XL

TRUE-PLUS FIT
2XL - 3XL
PETITE: 2XL - 3XL
TALL: 2XL - 3XL
(Size M leg opening: 24 cm)
Inseam length: Regular: 79 cm, Petite: 72 cm, Tall: 84 cm



- Two front pockets and two cargo pockets including one WonderWink signature triple pocket with hidden mesh cell phone pocket
- Full elastic waistband that can be worn flipped down
- Signature ID bungee loop



Boot Cut

www.WonderWink.eu



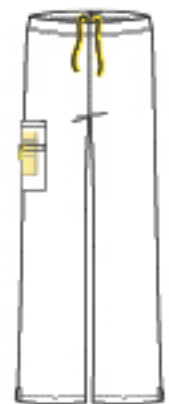
6006
THE ALPHA
UNISEX
V-NECK TOP

UNISEX FIT
XS - 3XL
(Size M length: 73 cm)

- One WonderWink signature triple chest pocket
- Signature ID bungee loop
- Vented sides



- One WonderWink signature triple cargo pocket with hidden mesh cell phone pocket and one back pocket
- Convertible drawstring can be worn tucked in or outside the pant
- Vented bottom



5036
THE SIERRA
UNISEX FULL
DRAWSTRING CARGO
PANT

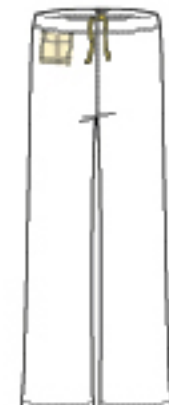
UNISEX FIT
XS - 3XL
PETITE: XS - 3XL
TALL: XS - 3XL
(Size M leg opening: 25 cm)
Inseam length:
Regular: 79 cm
Petite: 72 cm
Tall: 84 cm

- BLK CBL
NVY PEW
RYL WHT*

*WHT: Not available in Short or Tall



- One hidden front inside pocket and one WonderWink signature triple back pocket
- Full drawstring waist
- Convertible drawstring can be worn tucked in or outside the pant
- Signature ID bungee loop



5006
THE PAPA
UNISEX
SEAMLESS PANT

UNISEX FIT
XS - 3XL
(Size M leg opening: 25.5 cm)
Inseam length: 79 cm

- BLK CBL
NVY PEW
RYL WIN

Style #	6016	5016	6006	5006	5036
Sketch					
Style	The Bravo Women's V-Neck Top	The Quebec Women's Full Elastic Cargo Pant	The Alpha Unisex V-Neck Top	The Papa Unisex Drawstring Pant	The Sierra Unisex Drawstring Cargo Pant
Sizes	XS - 3XL	XS-3XL Petite: XS-3XL Tall: XS-3XL	XS - 3XL	XS - 5XL	XS-3XL Petite: XS-3XL Tall: XS-3XL
Fit	WM I WTP	WM I WTP	U	U	U
Pockets	5	7	1	4	5
Neck/Leg Style	V-Neck	Boot Cut	V-Neck	Straight Leg	Straight Leg
Badge/Utility Loop	•	•	•	•	•
Vented Sides/Bottoms	•		•		•
Drawstring		Full Elastic		Drawstring	Drawstring
Additional Features	Hidden mesh pocket, hidden three-part utility loop	Hidden mesh cell phone pocket	Signature triple pocket and bungee loop	Hidden mesh cell phone pocket	Hidden mesh cell phone pocket
white - WHT	WHT	WHT			WHT*
black - BLK	BLK	BLK	BLK	BLK	BLK
pewter - PEW	PEW	PEW	PEW	PEW	PEW
navy - NVY	NVY	NVY	NVY	NVY	NVY
royal - RYL	RYL	RYL	RYL	RYL	RYL
ceil blue - CBL	CBL	CBL	CBL	CBL	CBL
caribbean blue - CRB	CRB	CRB			
malibu blue - MBL	MBL	MBL			
hot pink - HPK	HPK	HPK			
wine - WIN	WIN	WIN	WIN	WIN	WIN

*WHT not available in Short or Tall.

HOW TO TAKE YOUR MEASUREMENTS:

BUST / CHEST

Exhale, then measure under your armpits, around the fullest part of your chest and shoulder blades.

LENGTH

We recommend ordering Petites for women 157 cm (5'2") and under. Regular length up to 170 cm (5'7") and Tall for 173 cm (5'8") and above. Short for men up to 172 cm (5'8"). Regular length up to 183 cm (6') and tall for 185 cm (6'1") and above.

WAIST

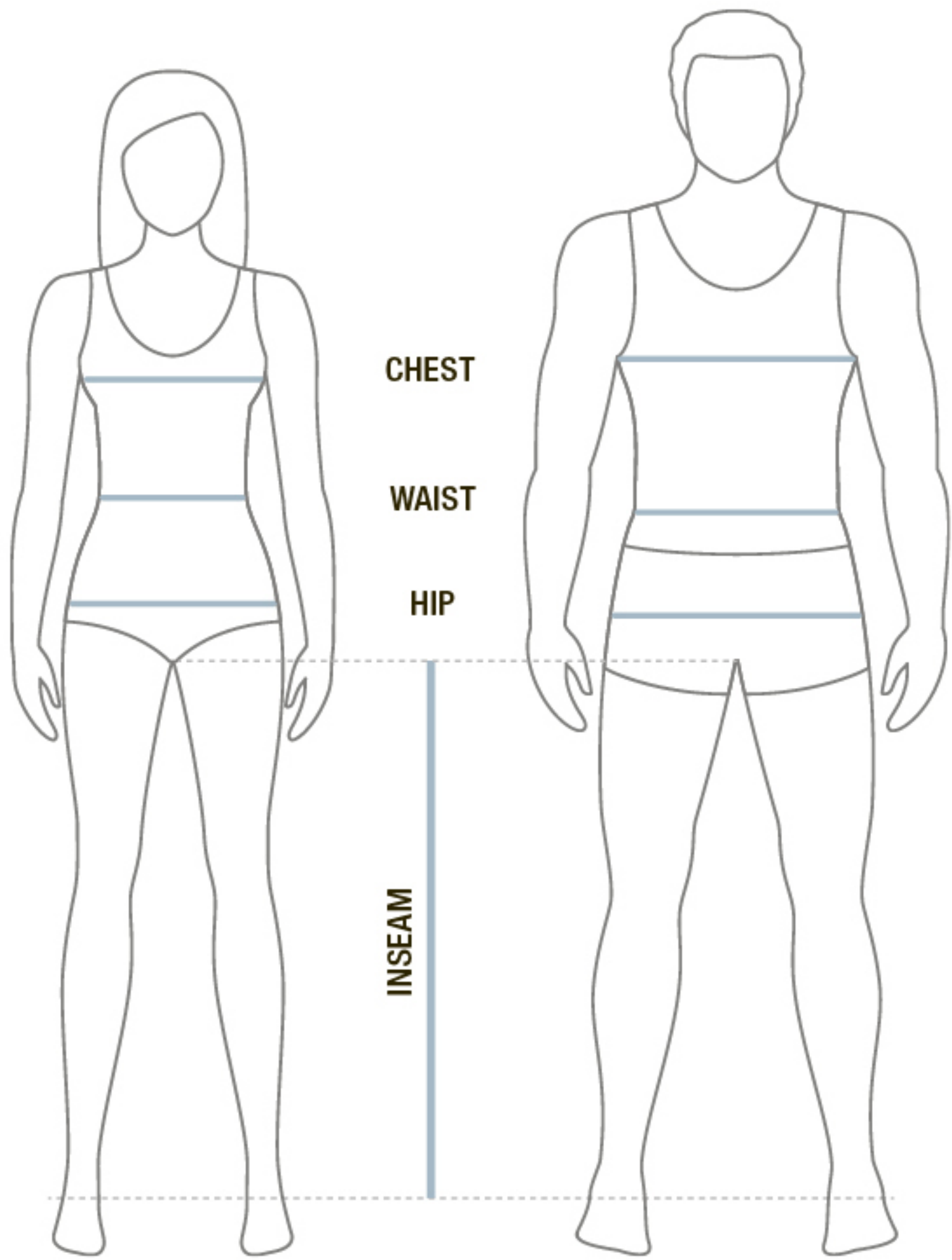
Keep the tape comfortably loose and measure around your natural waistline which is the point where you bend side to side.

HIP

Standing with your feet slightly apart, measure around the fullest part of your hips. Approximately 20 cm (8") below your waist.

INSEAM

Measure from the crotch to the bottom of the leg.



Women's Size Chart	XXS	XS	S	M	L	XL	1X*	2XL	3XL
EU Ready-to-Wear	30	32	34-36	38-40	42-44	46-48	48-50	50-52	54-56
UK Ready-to-Wear	4	6	8-10	12-14	16-18	20-22	22-24	24-26	28-30
US Ready-to-Wear	0	2	4-6	8-10	12-14	16-18	17-18	20-22	24-26
Bust (cm)	78-82	83-87	88-92	93-100	101-110	111-119	117-120	121-130	131-140
Waist (cm)	58-62	63-67	68-72	73-80	81-89	90-99	97-100	101-110	111-120
Hip (cm)	84-87	88-92	93-98	99-105	106-115	116-124	122-125	126-135	136-145
Bust (inch)	31-32	33-34	35-36	37-39	40-43	44-47	46-47	48-51	52-55
Waist (inch)	23-24	25-26	27-28	29-31	32-35	36-39	38-39	40-43	44-47
Hip (inch)	33-34	35-36	37-38	39-41	42-45	46-49	48-49	50-53	54-57

*1X in Renew only. Inseam: Regular - 79 cm (31"), Petite - 72 cm (28 ½"), Tall - 84 cm (33")

Unisex Size Chart	XXS	XS	S	M	L	XL	2XL	3XL
Chest (cm)	79-83	84-89	90-97	98-105	106-113	114-123	124-133	134-143
Waist (cm)	56-60	61-67	68-74	75-82	83-90	91-100	101-110	111-120
Hip (cm)	79-83	84-89	90-97	98-105	106-113	114-123	124-133	134-143
Chest (inch)	31-32	33-35	36-38	39-41	42-44	45-48	49-52	53-56
Waist (inch)	22-23	24-26	27-29	30-32	33-35	36-39	40-43	44-47
Hip (inch)	31-32	33-35	36-38	39-41	42-44	45-48	49-52	53-56

Inseam: Regular - 79 cm (31"), Petite - 72 cm (28 ½"), Tall - 84 cm (33")

WOMEN'S FIT:

Each garment is fit to comfortably contour and flatter the curves of your body. Find the true fit for you!

WOMEN'S MODERN FIT:

Cut closer to the body for a flattering and contoured look without sacrificing comfort.

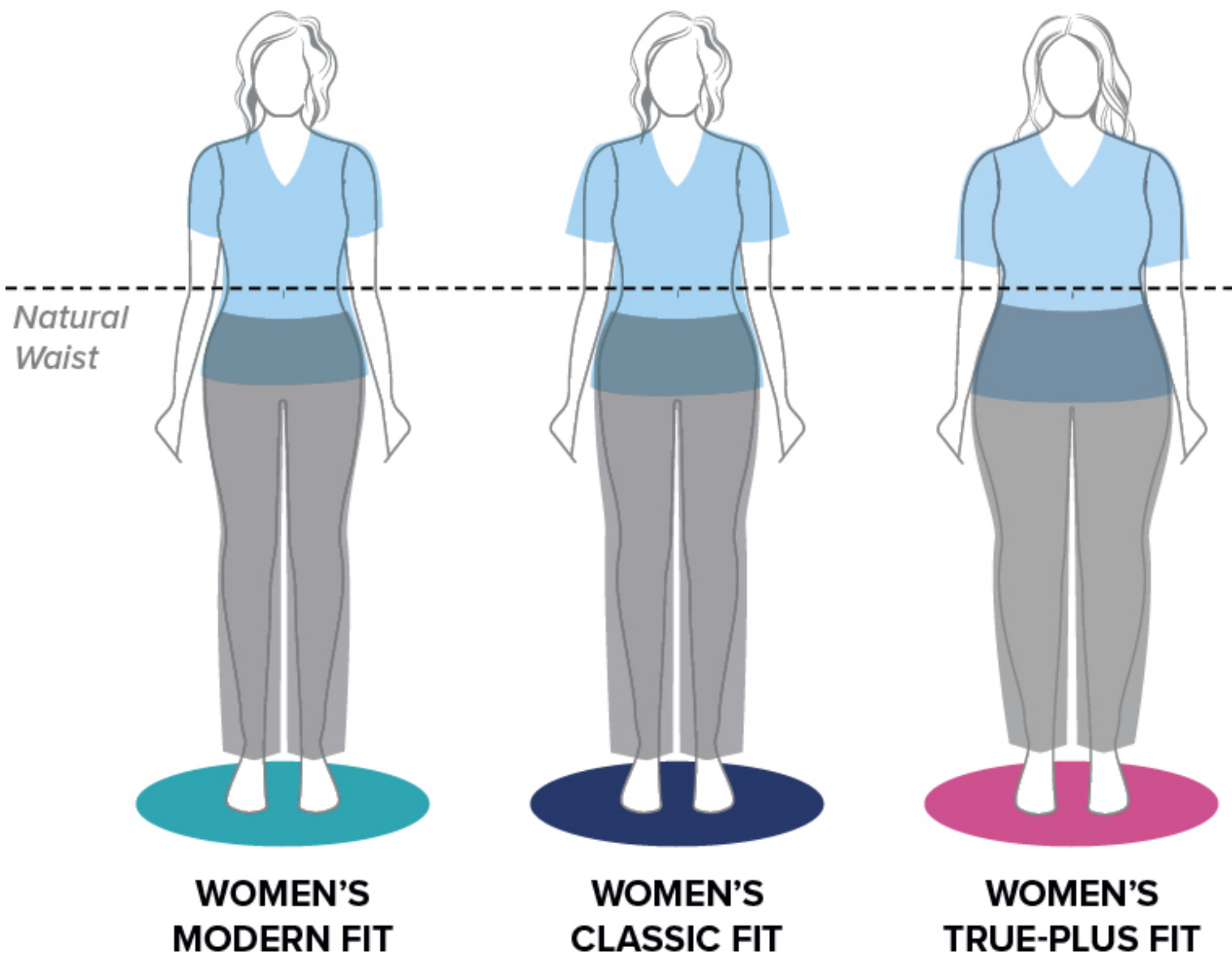
WOMEN'S CLASSIC FIT:

Comfortable and stylish in a relaxed fit that allows for mobility and ease of movement.

WOMEN'S TRUE-PLUS FIT:

Comfortable and flattering for curvy shapes that look and feel effortless.

Revolutionizing the industry, our Women's styles are offered in True-Plus Fit sizing. Available in 1X-5XL (1X in W123 and Renew only). Eliminate the tugging, the pulling, and the frustration with our attention to fit details such as longer sleeve lengths, higher pant rises, and curvier hips.



UNISEX FIT:

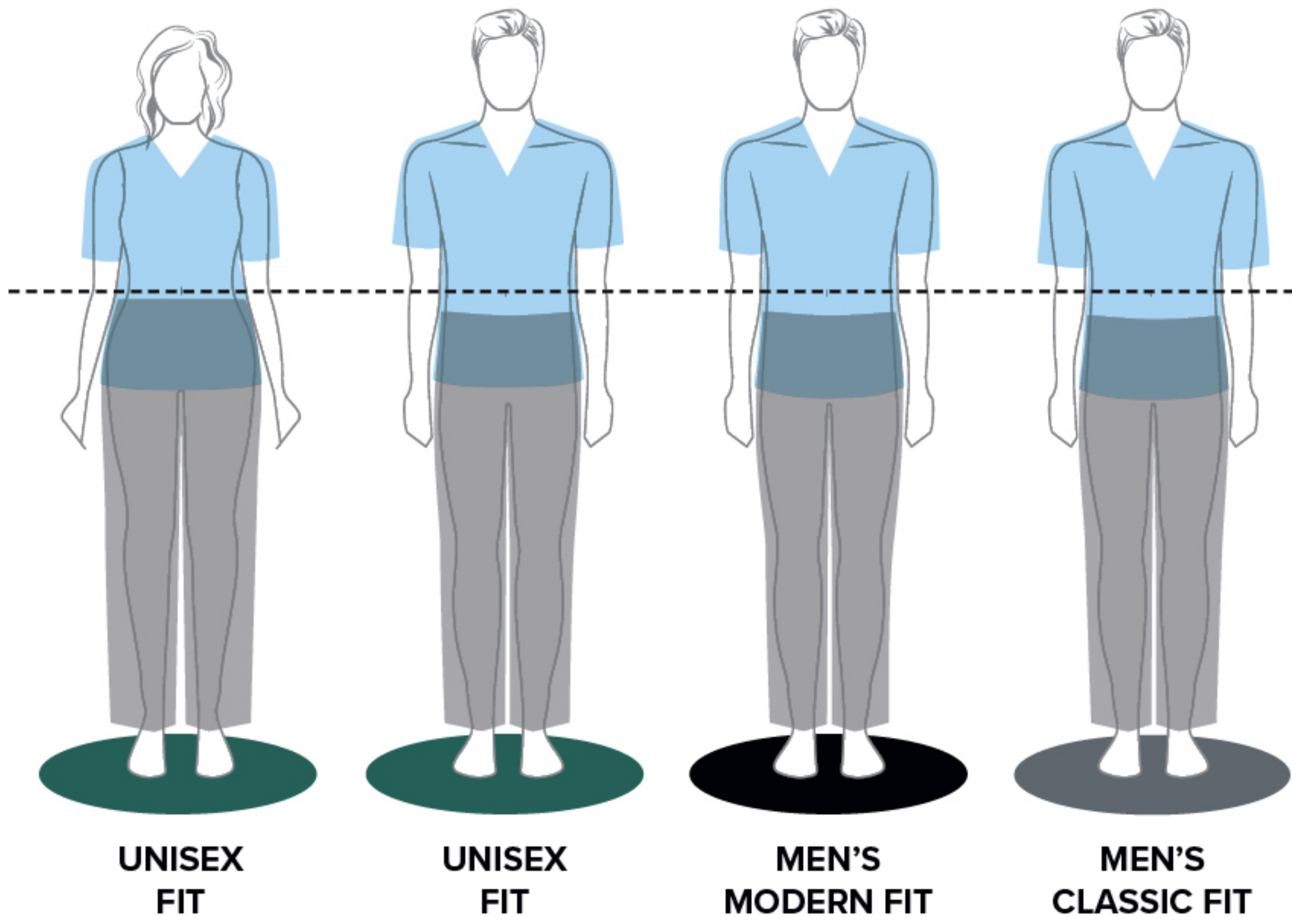
Relaxed and roomy to accommodate a full range of shapes and sizes.

MEN'S MODERN FIT:

Built specifically for a man, this garment is cut slimmer to the body for a more modern, tailored shape.

MEN'S CLASSIC FIT:

Relaxed fit that is comfortable, yet stylish.



Men's Size Chart	XS	S	M	L	XL	2XL	3XL
Chest (cm)	84-89	90-97	98-105	106-113	114-123	124-133	134-143
Waist (cm)	61-67	68-74	75-82	83-90	91-100	101-110	111-120
Hip (cm)	84-89	90-97	98-105	106-113	114-123	124-133	134-143
Chest (inch)	33-35	36-38	39-41	42-44	45-48	49-52	53-56
Waist (inch)	24-26	27-29	30-32	33-35	36-39	40-43	44-47
Hip (inch)	33-35	36-38	39-41	42-44	45-48	49-52	53-56

Inseam: Regular - 79 cm (31"), Petite - 72 cm (28 ½"), Tall - 86 cm (34")



**Z12213 FOT
FAR-OUT TIE-DYE
PINK
V-NECK PRINT TOP**

WOMEN'S CLASSIC FIT
XS - 3XL
(Size M length:
70.5 cm)

COORDINATING COLORS

WHIT CRCS
HPK PEW

- Two roomy lower pockets
- Flattering curved V-neck
- Side vents
- 92% Polyester / 8% Spandex



**Z12213 FTD
FAR-OUT TIE-DYE
BLUE
V-NECK PRINT TOP**

WOMEN'S CLASSIC FIT
XS - 3XL
(Size M length:
70.5 cm)

COORDINATING COLORS

BLAC AQU
MBL NAVY
ROYA

- Two roomy lower pockets
- Flattering curved V-neck
- Side vents
- 92% Polyester / 8% Spandex



**Z15213 GVF
GROOVY FLORAL
DIAMOND-NECK
PRINT TOP**

WOMEN'S CLASSIC FIT
XS - 3XL
(Size M length:
70.5 cm)

COORDINATING COLORS

NAVY CRCS
HPK YLW
WHIT

- Two roomy lower pockets
- Diamond-shaped neckline
- Side vents
- 92% Polyester / 8% Spandex



**Z14202 ASM
ALL SMILES
MOCK WRAP PRINT
TOP**

WOMEN'S CLASSIC FIT
XS - 3XL
(Size M length:
70.5 cm)

COORDINATING COLORS

CRCS PEW
RBS TEAL
YLW

- Two roomy lower pockets
- Mock wrap neck
- Side vents
- 100% Cotton





**Z12213 RGB
RAINGLOW
V-NECK PRINT TOP**

WOMEN'S CLASSIC FIT
XS - 3XL
(Size M length:
70.5 cm)

COORDINATING COLORS

BLAC	CRCS
GRAP	HPK
TEAL	YLW

- Two roomy lower pockets
- Flattering curved V-neck
- Side vents
- 92% Polyester / 8% Spandex



**Z12202 MGW
MAGICAL WISHES
V-NECK PRINT TOP**

WOMEN'S CLASSIC FIT
XS - 3XL
(Size M length:
70.5 cm)

COORDINATING COLORS

NAVY	GAP
HPK	LTUR
WHIT	YLW

- Two roomy lower pockets
- Flattering curved V-neck
- Side vents
- 100% Cotton



**Z14213 BBM
BLUEBONNET
BLOOM
MOCK WRAP PRINT
TOP**

WOMEN'S CLASSIC FIT
XS - 3XL
(Size M length:
70.5 cm)

COORDINATING COLORS

NAVY	CEIL
CRCS	GAP
HPK	YLW

- Two roomy lower pockets
- Mock wrap neck
- Side vents
- 92% Polyester / 8% Spandex



**Z15202 OPH
OKIE POKEY
HEDGEHOG
DIAMOND-NECK
PRINT TOP**

WOMEN'S CLASSIC FIT
XS - 3XL
(Size M length:
70.5 cm)

COORDINATING COLORS

BLAC	CRCS
FUSA	YLW
WHIT	

- Two roomy lower pockets
- Diamond-shaped neckline
- Side vents
- 100% Cotton



**Z12213 GVB
GOOD VIBES
V-NECK PRINT TOP**

WOMEN'S CLASSIC FIT
XS - 3XL
(Size M length:
70.5 cm)

COORDINATING COLORS

BLAC	CRCS
HPK	LTUR
PYA	YLW

- Two roomy lower pockets
- Flattering curved V-neck
- Side vents
- 92% Polyester / 8% Spandex



**Z12213 CRC
CURIOUS CRITTERS
V-NECK PRINT TOP**

WOMEN'S CLASSIC FIT
XS - 3XL
(Size M length:
70.5 cm)

COORDINATING COLORS

PEWT	BLAC
GAP	PYA
WHIT	YLW

- Two roomy lower pockets
- Flattering curved V-neck
- Side vents
- 92% Polyester / 8% Spandex





Z12213 HDD
HAPPY HOT DOGGY
V-NECK PRINT TOP

WOMEN'S CLASSIC FIT
XS - 3XL
(Size M length:
70.5 cm)

COORDINATING COLORS
NAVY AQU
GAP HPK
RED YLW

- Two roomy lower pockets
- Flattering curved V-neck
- Side vents
- 92% Polyester / 8% Spandex



Z12213 SPV
STAY PAWSITIVE
V-NECK PRINT TOP

WOMEN'S CLASSIC FIT
XS - 3XL
(Size M length:
70.5 cm)

COORDINATING COLORS
BLAC GREY
LTUR PEW
PYA WHIT

- Two roomy lower pockets
- Flattering curved V-neck
- Side vents
- 92% Polyester / 8% Spandex



*Available April 2022



Z16213 HTT
HEART TIES
NOTCH-NECK PRINT
TOP

WOMEN'S CLASSIC FIT
XS - 3XL
(Size M length:
70.5 cm)

COORDINATING COLORS
WHIT AQU
GAP HTPK
LILA YLW

- Two roomy lower pockets
- Notch neck
- Side vents
- 92% Polyester / 8% Spandex

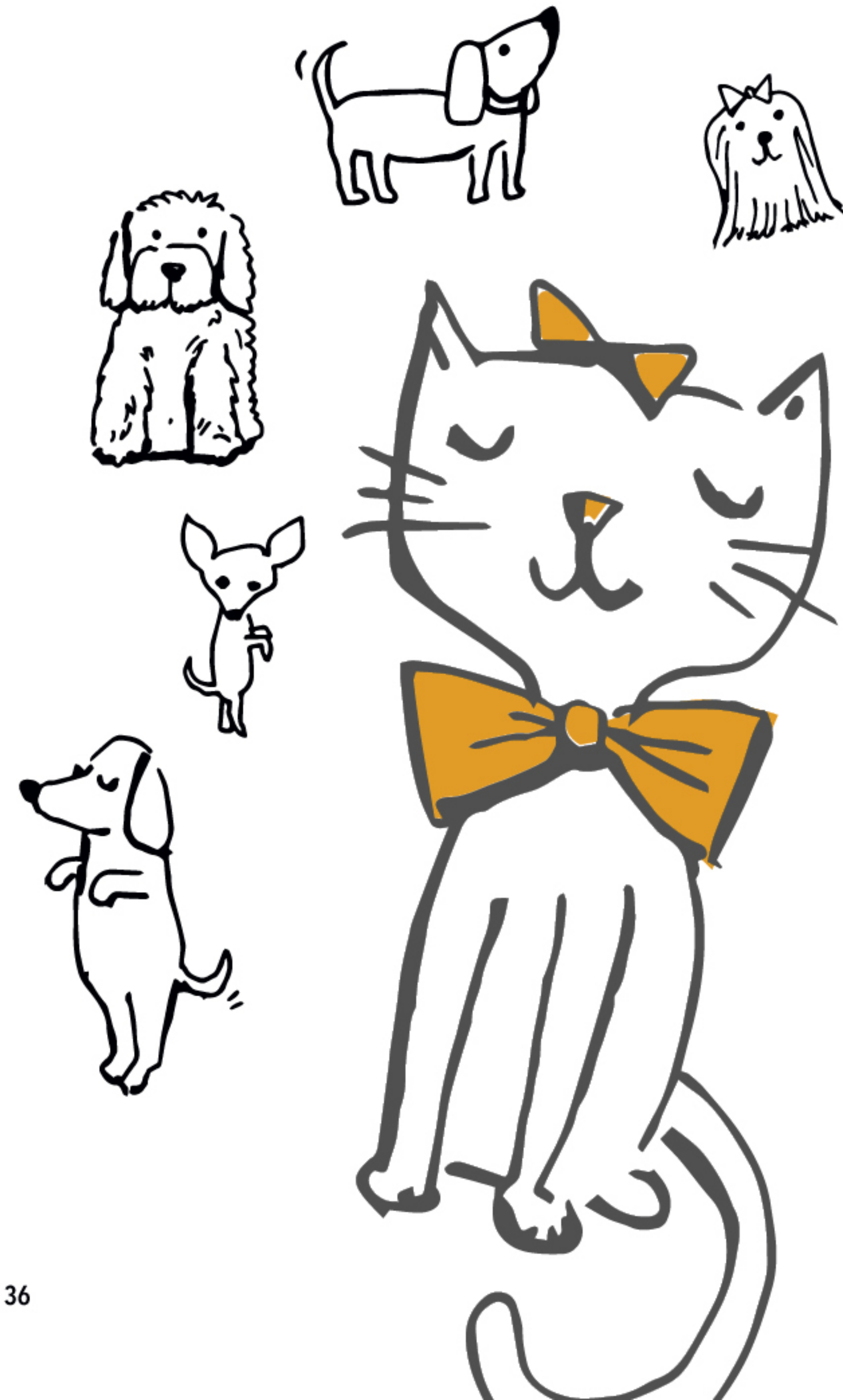


Z12213 ALU
A LEG UP
V-NECK PRINT TOP

WOMEN'S CLASSIC FIT
XS - 3XL
(Size M length:
70.5 cm)

COORDINATING COLORS
GREY BLAC
HTPK PEW
WHIT

- Two roomy lower pockets
- Flattering curved V-neck
- Side vents
- 92% Polyester / 8% Spandex



Z12213 CDH
CUDDLE HUDDLE
V-NECK PRINT TOP

WOMEN'S CLASSIC FIT
XS - 3XL
(Size M length:
70.5 cm)

COORDINATING COLORS
AQU BLAC
CHOC HPK
PEW WHIT
YLW

- Two roomy lower pockets
- Flattering curved V-neck
- Side vents
- 92% Polyester / 8% Spandex



Z14202 AOS
ALOHA SUMMER
MOCK WRAP PRINT
TOP

WOMEN'S CLASSIC FIT
XS - 3XL
(Size M length:
70.5 cm)

COORDINATING COLORS
PEWT GAP
HTPK WHIT

- Two roomy lower pockets
- Mock wrap neck
- Side vents
- 100% Cotton





**Z12213 AWW
A WHOLE VIBE
V-NECK PRINT TOP**

WOMEN'S CLASSIC FIT
XS - 3XL
(Size M length:
70.5 cm)

COORDINATING COLORS
BLAC AQU
GAP HTPK
YLW WHIT

- Two roomy lower pockets
- Flattering curved V-neck
- Side vents
- 92% Polyester / 8% Spandex



**Z12213 RWL
RAINBOW LEAP
V-NECK PRINT TOP**

WOMEN'S CLASSIC FIT
XS - 3XL
(Size M length:
70.5 cm)

COORDINATING COLORS
FGR HTPK
SURG TEAL

- Two roomy lower pockets
- Flattering curved V-neck
- Side vents
- 92% Polyester / 8% Spandex



**Z12213 POP
POOL PARTY
V-NECK PRINT TOP**

WOMEN'S CLASSIC FIT
XS - 3XL
(Size M length: 70.5 cm)

COORDINATING COLORS
AQU BLAC PEWT PYA
ROYA WHIT YLW

- Two roomy lower pockets
- Flattering curved V-neck
- Side vents
- 92% Polyester / 8% Spandex



**Z12202 TPT
TROPICAL TRUNKS
V-NECK PRINT TOP**

WOMEN'S CLASSIC FIT
XS - 3XL
(Size M length:
70.5 cm)

COORDINATING COLORS
PEW GAP
GREY TEAL
YLW

- Two roomy lower pockets
- Flattering curved V-neck
- Side vents
- 100% Cotton



**Z12213 KFT
KOALA FLOAT
V-NECK PRINT TOP**

WOMEN'S CLASSIC FIT
XS - 3XL
(Size M length: 70.5 cm)

COORDINATING COLORS
ROYA GREY LTUR WHIT

- Two roomy lower pockets
- Flattering curved V-neck
- Side vents
- 92% Polyester / 8% Spandex





**Z12213 PPT
PEDAL PETS
V-NECK PRINT TOP**

WOMEN'S CLASSIC FIT
XS - 3XL
(Size M length: 70.5 cm)

- Two roomy lower pockets
- Flattering curved V-neck
- Side vents
- 92% Polyester / 8% Spandex

COORDINATING COLORS

GREY

BLAC

PEWT

PYA

TEAL

WHIT



**Z14213 PCT
PAWCENTRIC
MOCK WRAP PRINT TOP**

WOMEN'S CLASSIC FIT
XS - 3XL
(Size M length: 70.5 cm)

- Two roomy lower pockets
- Flattering curved V-neck
- Side vents
- 92% Polyester / 8% Spandex

COORDINATING COLORS

NAVY

GAP

HTPK

WHIT



**Z12202 EBD
EARLY BIRDS
V-NECK PRINT TOP**

WOMEN'S CLASSIC FIT
XS - 3XL
(Size M length: 70.5 cm)

- Two roomy lower pockets
- Flattering curved V-neck
- Side vents
- 100% Cotton

COORDINATING COLORS

WHIT

BLAC

GAP

PYA

TEAL

YLW



**Z16213 KPG
KEEP GROWING
NOTCH-NECK PRINT TOP**

WOMEN'S CLASSIC FIT
XS - 3XL
(Size M length: 70.5 cm)

- Two roomy lower pockets
- Notch neck
- Side vents
- 92% Polyester / 8% Spandex

COORDINATING COLORS

NAVY

AQU

PYA

YLW



RED, WHITE & BLUE

*Available April 2022



**Z12213 FMS
FREEDOM SPARKLE
V-NECK PRINT TOP**

WOMEN'S CLASSIC FIT
XS - 3XL
(Size M length: 70.5 cm)

- Two roomy lower pockets
- Flattering curved V-neck
- Side vents
- 92% Polyester / 8% Spandex

COORDINATING COLORS



**Z16213 BBT
BIG AND BRIGHT
NOTCH-NECK PRINT TOP**

WOMEN'S CLASSIC FIT
XS - 3XL
(Size M length: 70.5 cm)

- Two roomy lower pockets
- Notch neck
- Side vents
- 92% Polyester / 8% Spandex

COORDINATING COLORS



SCRUB CAPS



**Z44002 ASM
ALL SMILES
SCRUB CAP**

UNISEX FIT
ONE SIZE

COORDINATING COLORS



- Tie back
- Terry sweatband at center front
- Internal elastic for secure fit
- 100% Cotton



**Z44002 MGW
MAGICAL WISHES
SCRUB CAP**

UNISEX FIT
ONE SIZE

COORDINATING COLORS



- Tie back
- Terry sweatband at center front
- Internal elastic for secure fit
- 100% Cotton



**Z44002 EBD
EARLY BIRDS
SCRUB CAP**

UNISEX FIT
ONE SIZE

*Available April 2022

COORDINATING COLORS



- Tie back
- Terry sweatband at center front
- Internal elastic for secure fit
- 100% Cotton



**Z44002 OPH
OKIE POKEY HEDGEHOG
SCRUB CAP**

UNISEX FIT
ONE SIZE

COORDINATING COLORS



- Tie back
- Terry sweatband at center front
- Internal elastic for secure fit
- 100% Cotton



**Z44002 AOS
ALOHA SUMMER
SCRUB CAP**

UNISEX FIT
ONE SIZE

*Available April 2022

COORDINATING COLORS



- Tie back
- Terry sweatband at center front
- Internal elastic for secure fit
- 100% Cotton





SCRUB CAPS



**Z43213 BBT
BIG AND BRIGHT
BOUFFANT SCRUB CAP**

UNISEX FIT
ONE SIZE

*Available April 2022

COORDINATING COLORS
REDT NAVY WHIT

- Terry sweatband at center front
- Bungee and stopper at back for secure fit
- Bouffant style for added volume
- 92% Polyester / 8% Spandex



**Z43213 FMS
FREEDOM SPARKLE
BOUFFANT SCRUB CAP**

UNISEX FIT
ONE SIZE

*Available April 2022

COORDINATING COLORS
NAVY GRAP HTPK
MBL REDT ROYA

- Terry sweatband at center front
- Bungee and stopper at back for secure fit
- Bouffant style for added volume
- 92% Polyester / 8% Spandex



**Z43213 KPG
KEEP GROWING
BOUFFANT SCRUB CAP**

UNISEX FIT
ONE SIZE

*Available April 2022

COORDINATING COLORS
NAVY AQU PYA
YLW

- Terry sweatband at center front
- Bungee and stopper at back for secure fit
- Bouffant style for added volume
- 92% Polyester / 8% Spandex



**Z43213 PCT
PAWCENTRIC
BOUFFANT SCRUB CAP**

UNISEX FIT
ONE SIZE

*Available April 2022

COORDINATING COLORS
NAVY GAP HTPK
WHIT

- Terry sweatband at center front
- Bungee and stopper at back for secure fit
- Bouffant style for added volume
- 92% Polyester / 8% Spandex



**Z43213 HTT
HEART TIES
BOUFFANT SCRUB CAP**

UNISEX FIT
ONE SIZE

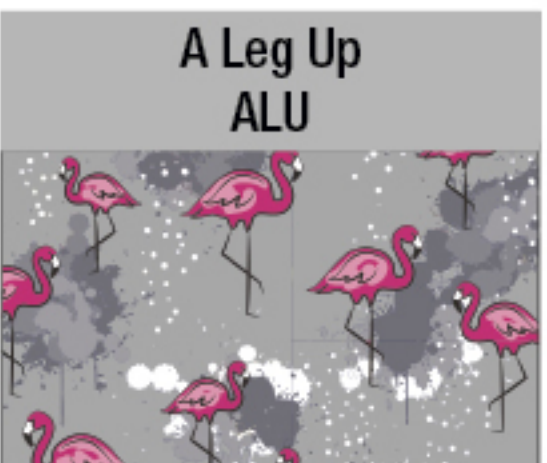
*Available April 2022

COORDINATING COLORS
WHIT AQU GAP
HTPK LILA YLW

- Terry sweatband at center front
- Bungee and stopper at back for secure fit
- Bouffant style for added volume
- 92% Polyester / 8% Spandex



SEASONAL PRINTS COLLECTION



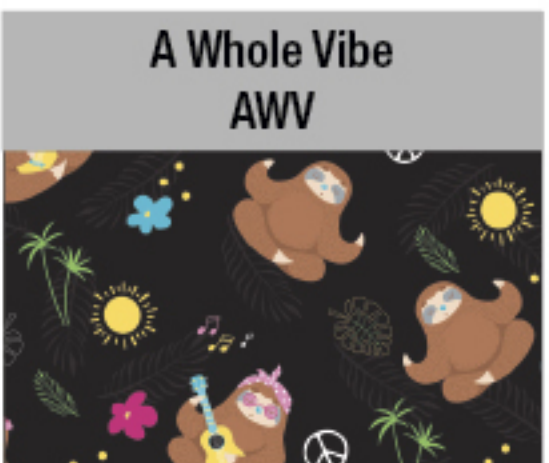
Z12213 XS - 3XL



Z14202 Z44002 XS - 3XL One Size



Z14202 Z44002 XS - 3XL One Size



Z12213 XS - 3XL



Z14213 XS - 3XL



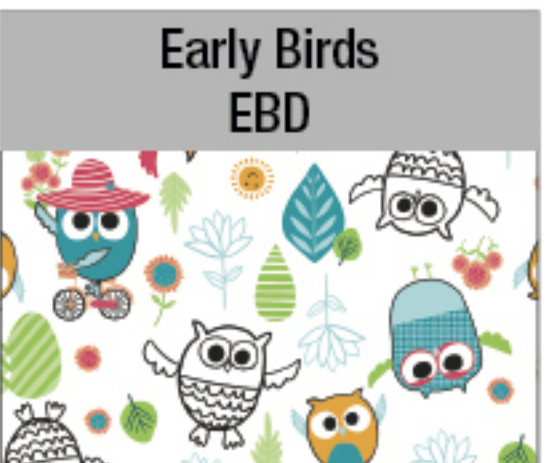
Z16213 Z43213 XS - 3XL One Size



Z12213 XS - 3XL



Z12213 XS - 3XL



Z12202 Z44002 XS - 3XL One Size



Z12213 Z43213 XS - 3XL One Size



Z12213 XS - 3XL



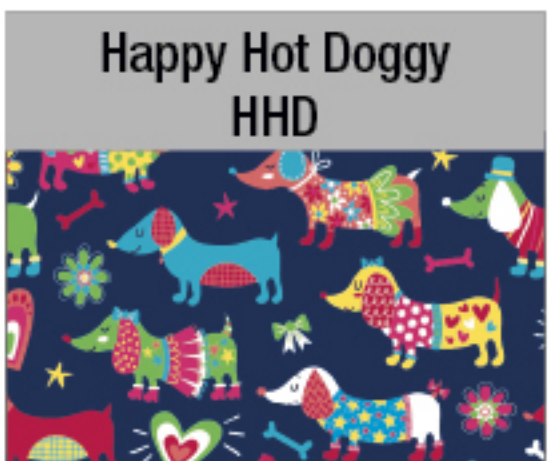
Z12213 XS - 3XL



Z12213 XS - 3XL



Z15213 XS - 3XL



Z12213 XS - 3XL



Z16213 Z43213 XS - 3XL One Size



Z12213 XS - 3XL



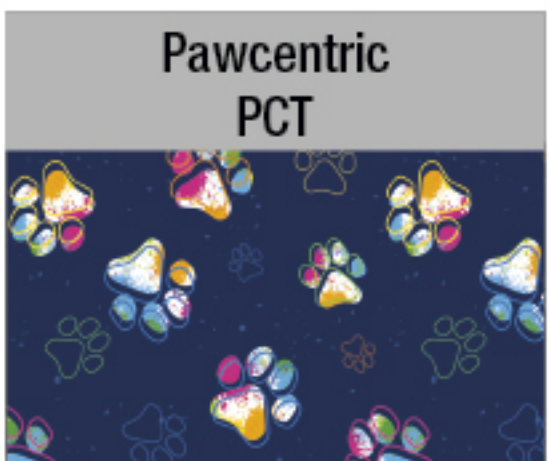
Z16213 Z43213 XS - 3XL One Size



Z12202 Z44002 XS - 3XL One Size



Z15202 Z44002 XS - 3XL One Size



Z14213 Z43213 XS - 3XL One Size



Z12213 XS - 3XL



Z12213 XS - 3XL



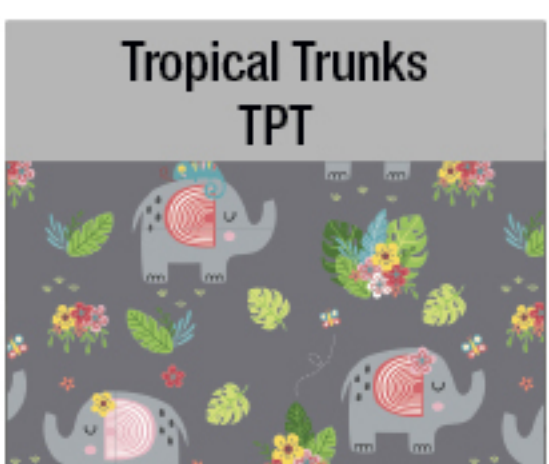
Z12213 XS - 3XL



Z12213 XS - 3XL



Z12213 XS - 3XL

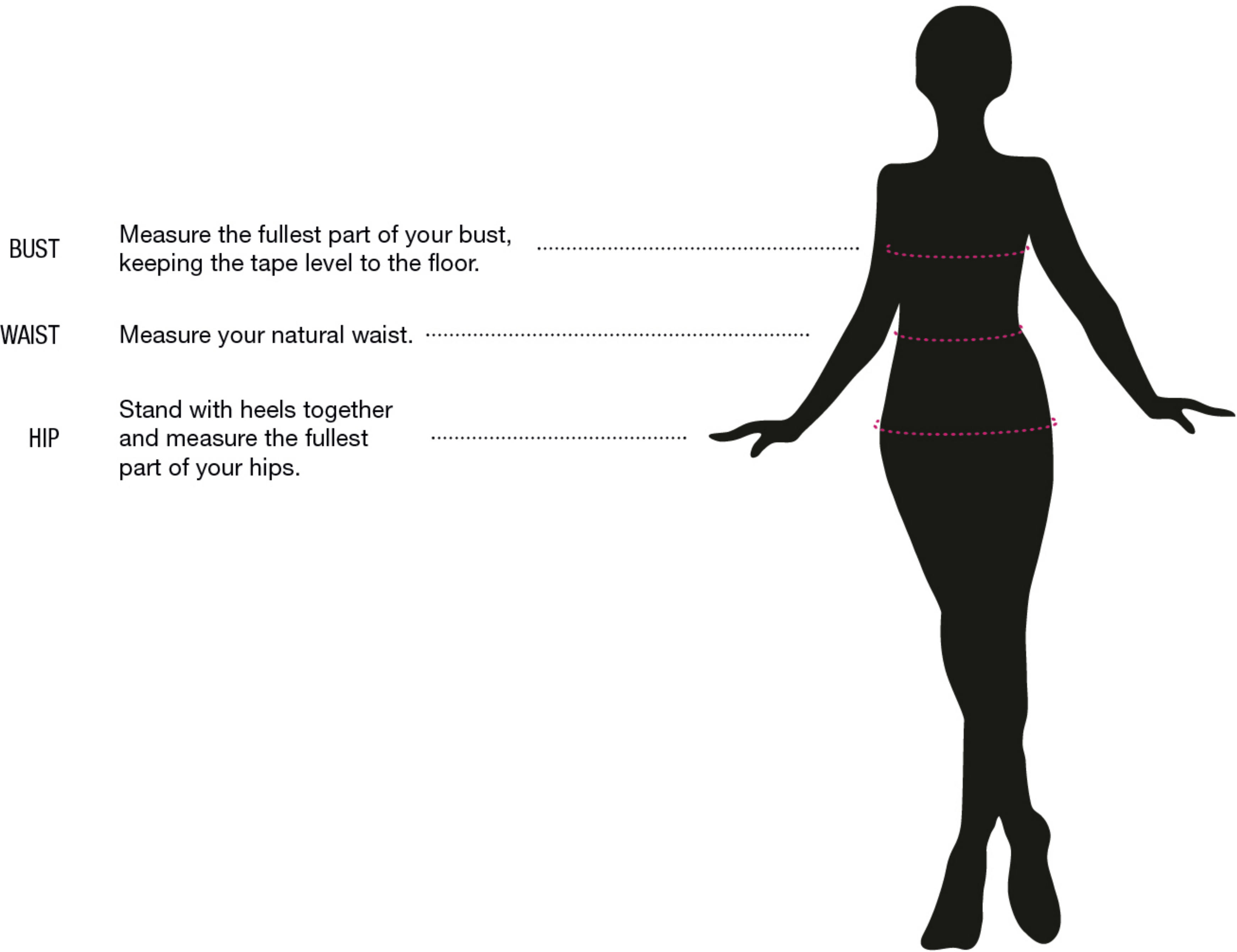


Z12202 XS - 3XL



SIZE CHART

HOW TO TAKE YOUR MEASUREMENTS:









WOMEN'S CLASSIC FIT



SIZE	XS	S	M	L	XL	2XL	3XL
Bust (cm)	81-84	86-91	94-99	101-106	109-114	116-124	127-135
Waist (cm)	66-71	74-79	81-86	89-94	96-101	104-112	114-122
Hip (cm)	86-89	91-96	99-104	107-112	114-119	122-129	132-140
Bust (inch)	32-33	34-36	37-39	40-42	43-45	46-49	50-53
Waist (inch)	26-28	29-31	32-34	35-37	38-40	41-44	45-48
Hip (inch)	34-35	36-38	39-41	42-44	45-47	48-51	52-55



**Numeric specifications are body measurements.
Follow the “How to Take Your Measurements” instruction to determine your size range.



<p>Z12213 V-Neck Print Top</p> 	<p>Z14213 Mock Wrap Print Top</p> 	<p>Z15213 Diamond Neck Print Top</p> 
<p>92% Polyester / 8% Spandex</p> <p>Two roomy lower pockets</p> <p>Flattering curved V-neck</p> <p>Side vents</p> <p>Size M length: 70.5 cm</p>	<p>92% Polyester / 8% Spandex</p> <p>Two roomy lower pockets</p> <p>Mock wrap neck</p> <p>Side vents</p> <p>Size M length: 70.5 cm</p>	<p>92% Polyester / 8% Spandex</p> <p>Two roomy lower pockets</p> <p>Diamond-shaped neckline</p> <p>Side vents</p> <p>Size M length: 70.5 cm</p>
<p>Z12202 V-Neck Print Top</p> 	<p>Z14202 Mock Wrap Print Top</p> 	<p>Z15202 Diamond-Neck Print Top</p> 
<p>100% Cotton</p> <p>Two roomy lower pockets</p> <p>Flattering curved V-neck</p> <p>Side vents</p> <p>Size M length: 70.5 cm</p>	<p>100% Cotton</p> <p>Two roomy lower pockets</p> <p>Mock wrap neck</p> <p>Side vents</p> <p>Size M length: 70.5 cm</p>	<p>100% Cotton</p> <p>Two roomy lower pockets</p> <p>Diamond-shaped neckline</p> <p>Side vents</p> <p>Size M length: 70.5 cm</p>
<p>Z16213 Notch-Neck Print Top</p> 	<p>Z43213 Printed Bouffant Scrub Cap</p> 	<p>Z44002 Printed Scrub Cap</p> 
<p>92% Polyester / 8% Spandex</p> <p>Two roomy lower pockets</p> <p>Notch neck</p> <p>Side vents</p> <p>Size M length: 70.5 cm</p>	<p>92% Polyester / 8% Spandex</p> <p>Terry sweat band at center front</p> <p>Bungee and stopper at back for secure fit</p> <p>Bouffant style for added volume</p>	<p>100% Cotton</p> <p>Tie back</p> <p>Terry sweatband at center front</p> <p>Internal elastic for secure fit</p>

CID Resources, Inc.
International Customer Care: 1 833 290 4892
www.WonderWink.eu

 @wonderwinkeurope
 @wonderwinkscrubs

 @wonderwinkscrubs
 @wonderwink